

BILL OF MATERIAL					
	QTY.	DESCRIPTION	SUPPLIER	ESTM. COST	ITEM NO.
R5	1	4 POLE BARRIER STRIP	T.B.D.	\$4	52
R5	1	8 POLE BARRIER STRIP	T.B.D.	\$4	53
R6	6	20x80 END CAP	3D PRINTED PART	\$0	54
R6	2	20x60 END CAP	3D PRINTED PART	\$0	55
R6	1	SPINDLE MOUNT OFFSET PLATE,0.50 X 3.00 X 8.00	MILLED PART	\$8	56
★ R6	2	EXTREME V WHEEL ASSY - FULL SIZE	OPENBUILDS	\$6	57
R6	1	X AND Z BARRIER STRIP OFFSET PLATE	MILLED PART	\$2	58
R6	1	CHUCK BELT COVER TOP	3D PRINTED PART	\$0	59
R6	1	CHUCK BELT COVER SIDE	3D PRINTED PART	\$0	60
★ R6	1	Eccentric Spacer (SKU EccentricSpacer)	OPENBUILDS	\$2	61
★ R6	2	Low Profile Screw M5 x 30 (SKU 125-pack)	OPENBUILDS	\$0.19	62
R6	2	ALUMINUM,0.25 IN. THK X 35mm X 80mm LONG	MILLED PART	\$2	63
R6	2	ALUMINUM ,0.12 IN. THK X 20mm X 80mm LONG	MILLED PART	\$2	64
R6	8	SCREW, PAN HEAD, #8 (.164)-32UNC X 3.00	T.B.D.	\$0.15	65
R6	8	NUT, HEX, #8-32UNC	T.B.D.	\$0.15	66
★ R6	1	ALUMINUM SPACER,6mm (SKU 90-Pack)	OPENBUILDS	\$0.30	67

BILL OF MATERIAL					
	QTY.	DESCRIPTION	SUPPLIER	ESTM. COST	ITEM NO.
★	2	V-Slot 20x80 Linear Rail - 250mm	OPENBUILDS	\$6	1
★	3	V-Slot 20x80 Linear Rail - 1500mm	OPENBUILDS	\$32	2
★	2	V-Slot 20x80 Linear Rail - 500mm	OPENBUILDS	\$11	3
★	1	V-Slot 20x80 Linear Rail - 250mm CUT TO 120mm	OPENBUILDS	\$6	4
★	2	V-Slot 20x80 Linear Rail - 250mm CUT TO 60mm	OPENBUILDS	\$3	5
★	2	V-Slot 20x60 Linear Rail - 250mm CUT TO 120mm	OPENBUILDS	\$2.75	6
★	1	GANTRY PLATE SUB ASSEMBLY	OPENBUILDS	\$41.12	7
★	1	XL C-Beam Linear Actuator Bundle - 250mm	OPENBUILDS	\$141	8
	2	SIDE PLATE,0.125 X 9.65 X 20.47 - MILLED PART	MILLED PART	\$15	9
	2	ALUMINUM BAR,0.125 IN. THK X 0.75 IN. X 80mm LONG	MILLED PART	\$1	10
	2	ALUMINUM BAR,0.125 IN. THK X 0.75 IN. X 120mm LONG	MILLED PART	\$1	11
	2	ALUMINUM BAR,0.25 IN. THK X 2.50 IN. X 120mm LONG	MILLED PART	\$3	12
	124	CAST CORNER BRACKET	AMAZON	\$1.50	13
	1	DEWALT 611	T.B.D.	\$120	14
	1	TAIL STOCK (INCLUDED WITH ROTARY AXIS)	AMAZON	(SEE ROTARY)	15
	1	ROTARY AXIS - 100mm - 3 JAW	AMAZON	\$330	16
★	2	Router/Spindle Mount	OPENBUILDS	\$32	17
★	1	MOTOR MOUNT,NEMA 17 AND 23	INVENTABLES	\$10	18
	2	269oz STEPPER MOTOR	AMAZON	\$35	19
	2	SMOOTH IDLER PULLEY	OPENBUILDS	\$5.50	20
	1	3GT (GT2-3M) Timing Pulley - 20 Tooth - .250" Bore - 9mm Belt	OPENBUILDS	\$7	21
	2	9MM 3GT3 BELT END CLIPS	DBP	\$10	22
	2	M5 CLAMPING LEVER HANDLE	VARIES	\$3	23
	2	T BOLT, M5-.8 X 16mm	VARIES	\$0.35	24
	2	SCREW,BUTTON HD CAP,M5-0.8 X 8	T.B.D.	\$0.10	25
	286	SCREW,BUTTON HD CAP,M5-0.8 X 10	T.B.D.	\$0.10	26
	2	SCREW,BUTTON HD CAP,M5-0.8 X 12	T.B.D.	\$0.13	27
★	8	Low Profile Screw M5 x 12 (SKU 2190-pack)	OPENBUILDS	\$0.15	28
	1	SCREW,BUTTON HD CAP,M5-0.8 X 14	T.B.D.	\$0.13	31
	8	SCREW,SOCKET HEAD,M5-.8 X 14	T.B.D.	\$0.25	30
	2	SCREW,SOCKET HEAD,M5-.8 X 16	T.B.D.	\$0.25	31
	4	SCREW,SOCKET HEAD,M5-.8 X 20	T.B.D.	\$0.25	32
	6	SCREW,SOCKET HEAD,M5-.8 X 25	T.B.D.	\$0.25	33
	8	SCREW,SOCKET HEAD,M5-.8 X 30	T.B.D.	\$0.20	34
	1	SCREW,BUTTON HD CAP,M5-0.8 X 30	T.B.D.	\$0.20	35
	9	WASHER,FLAT,M5	T.B.D.	\$0.05	36
★	2	Precision Shim - 10x5x1mm (SKU 5)	OPENBUILDS	\$0.30	37
	315	WASHER,LOCK,REGULAR,M5	T.B.D.	\$0.08	38
	304	M5 T NUT	T.B.D.	\$0.20	39
	8	NUT,LOCK,M5 X 0.8	T.B.D.	\$0.10	40
	1	UPPER DRAG CHAIN BRACKET	MILLED PART	\$1	41
	1	LOWER DRAG CHAIN BRACKET	MILLED PART	\$1	42
R3	2	V-Slot 20x40 Linear Rail - 1500mm CUT TO 1300mm	OPENBUILDS	\$21	43
R3	3	20mm X 15mm DRAG CHAIN - 1000mm LENGTH	T.B.D.	\$13	44
R3	1	UPPER DRAG CHAIN CABLE GUIDE	MILLED PART	\$2	45
R3	1	UPPER DRAG CHAIN CABLE GUIDE OFFSET BRACKET	MILLED PART	\$1	46
R3	4	SCREW,SOCKET HEAD FLAT M4-0.7 X 16	T.B.D.	\$0.12	47
R3	4	NUT,LOCK,M4	T.B.D.	\$0.10	48
R4	3	DRAG CHAIN SUPPORT BRACKET	MILLED PART	\$1	49
R5	15	MOTOR CABLE CLIP	3D PRINTED PART	\$0	50
R5	5	RELAY WIRE COVER	3D PRINTED PART	\$0	51

★ = OPENBUILDS OR INVENTABLES PROPRIETARY ITEMS. ALL OTHER ITEMS CAN BE SOURCED FROM MULTIPLE PLACES.

R3 = ITEMS ADDED REV 03

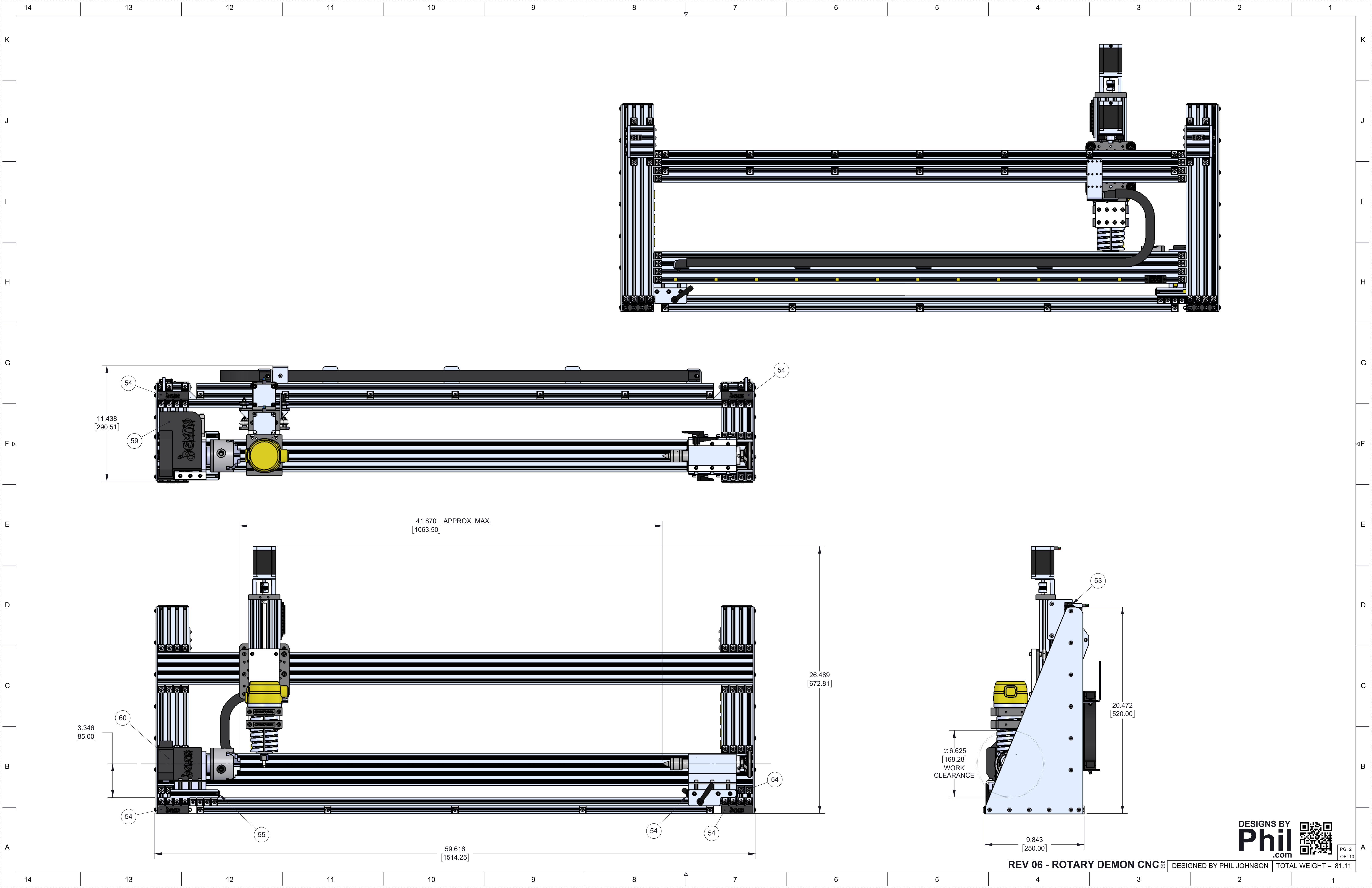
R4 = ITEMS ADDED REV 04

R5 = ITEMS ADDED REV 05

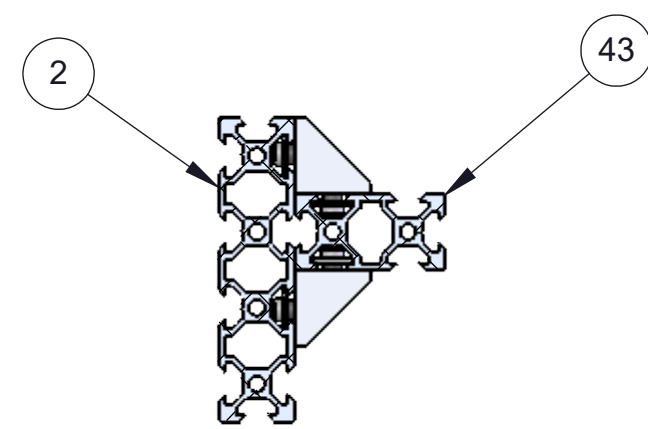
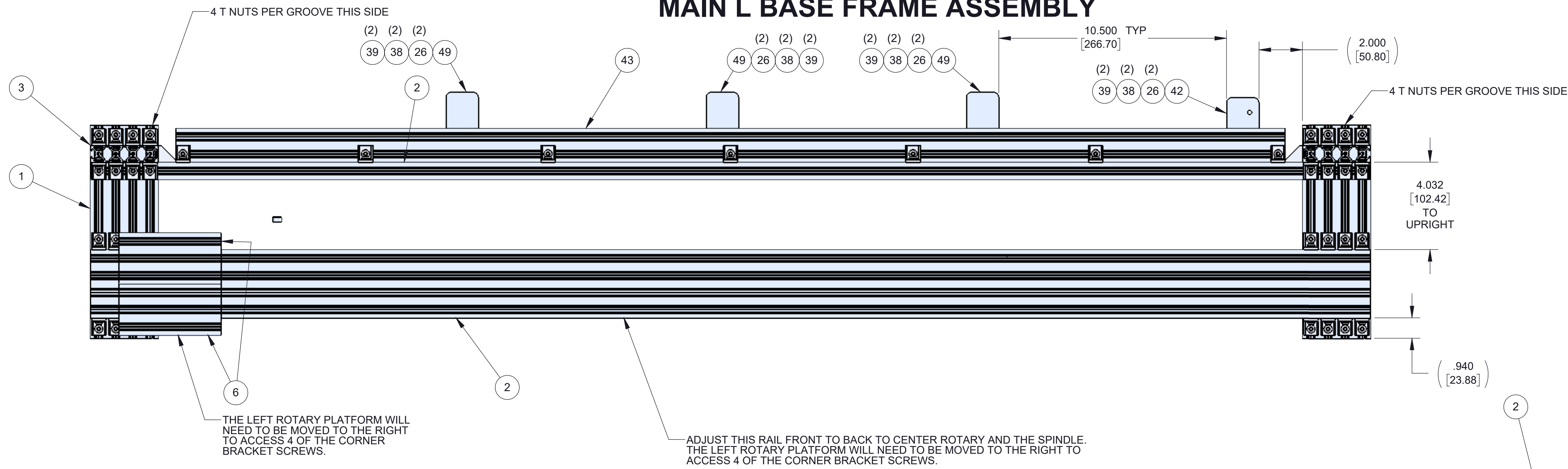
R6 = ITEMS ADDED REV 06



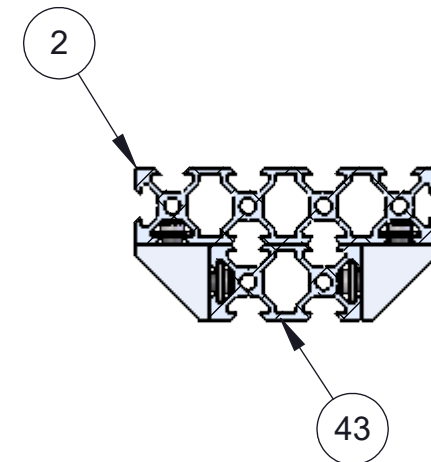
PG: 1
OF: 10



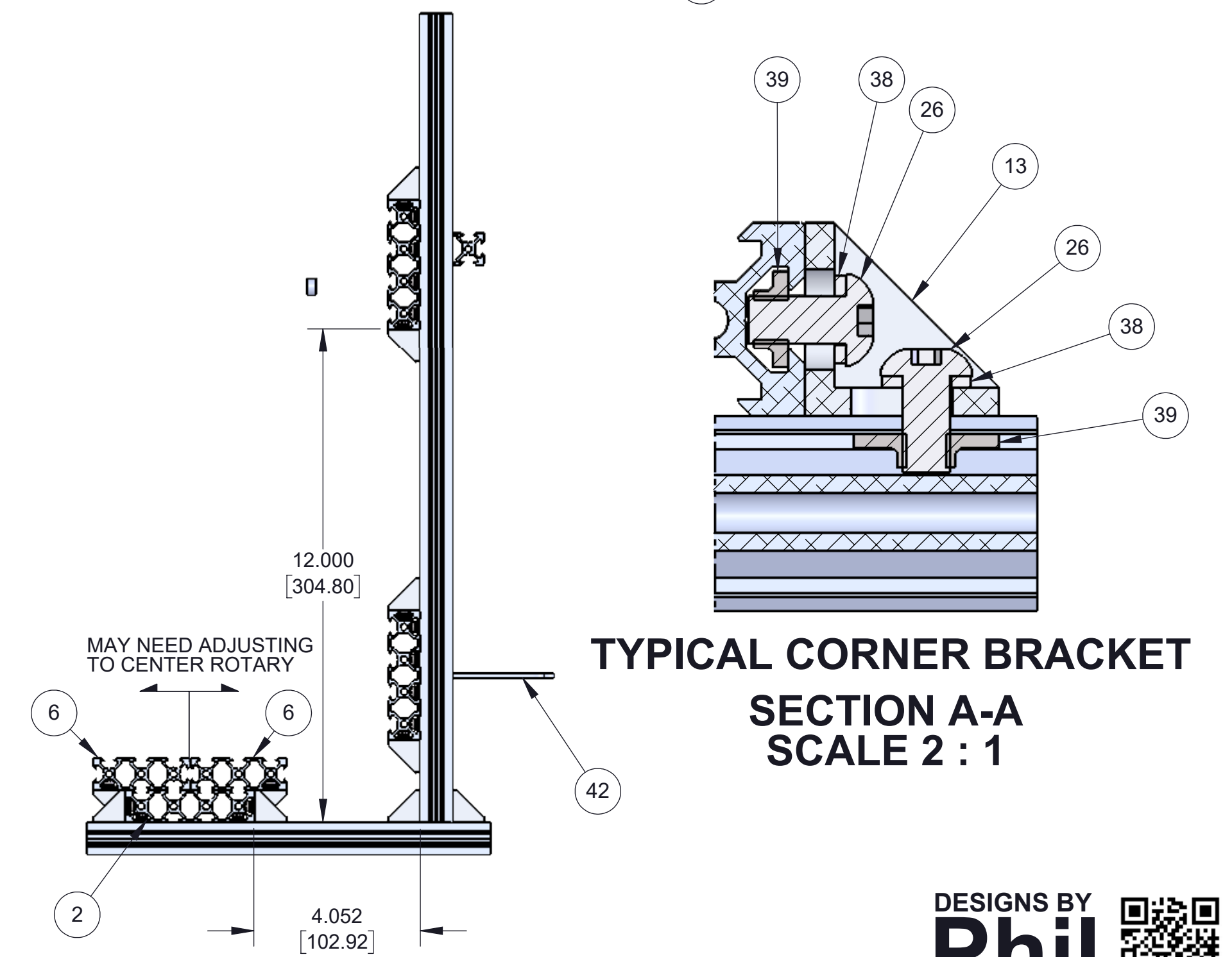
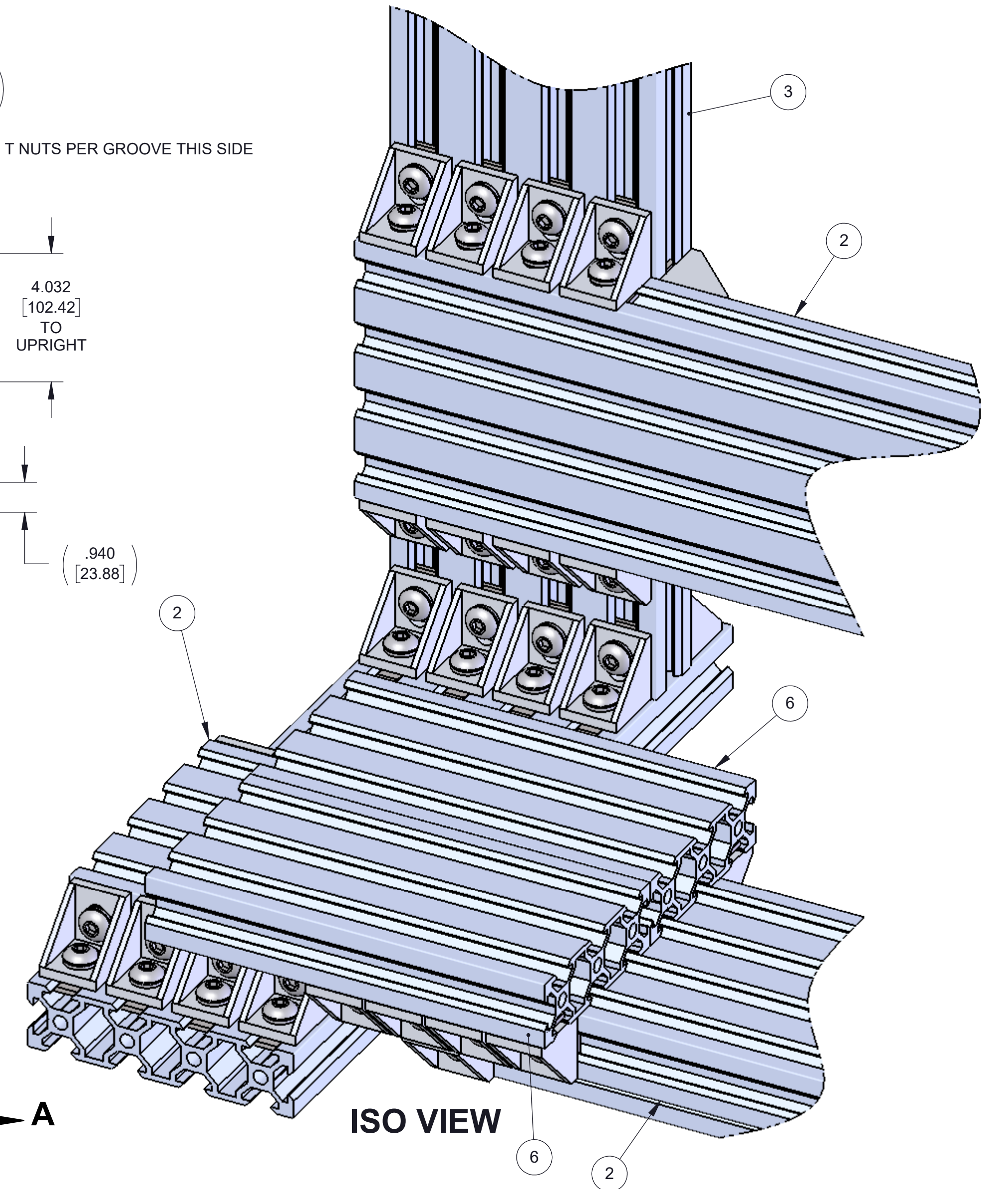
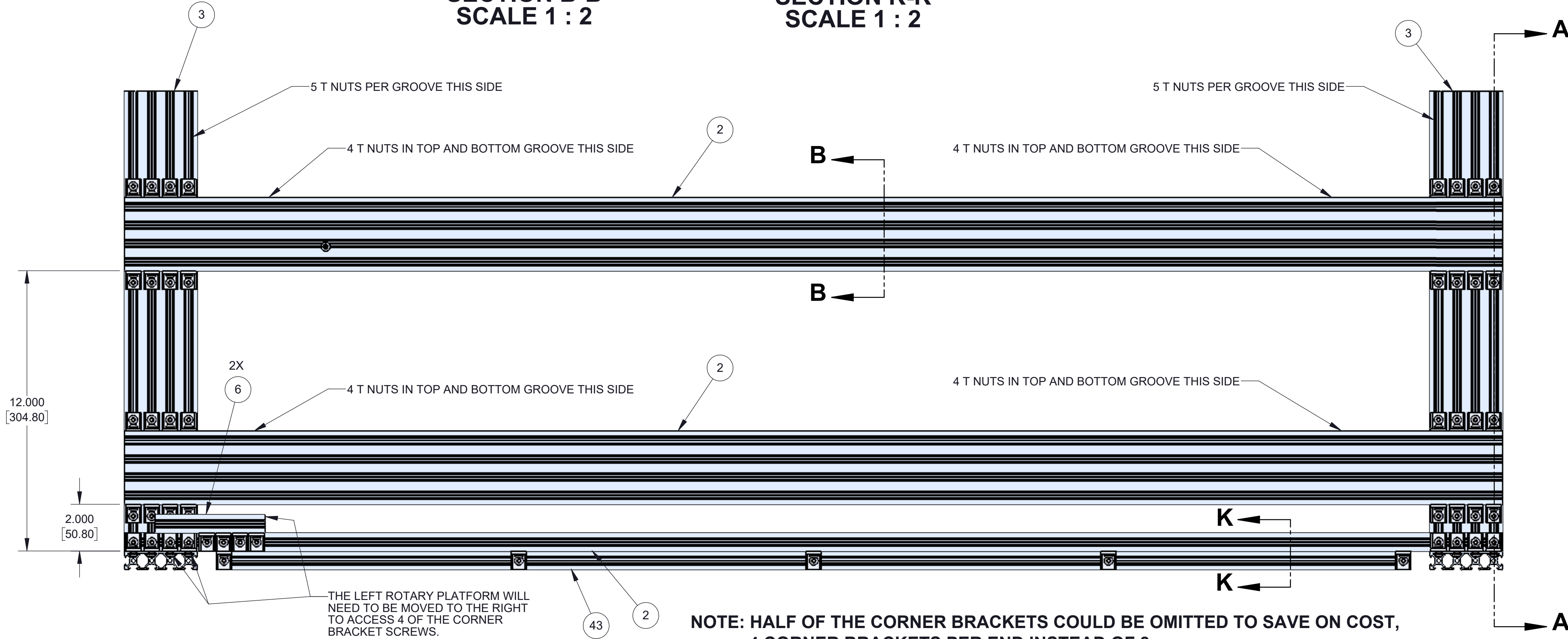
MAIN L BASE FRAME ASSEMBLY



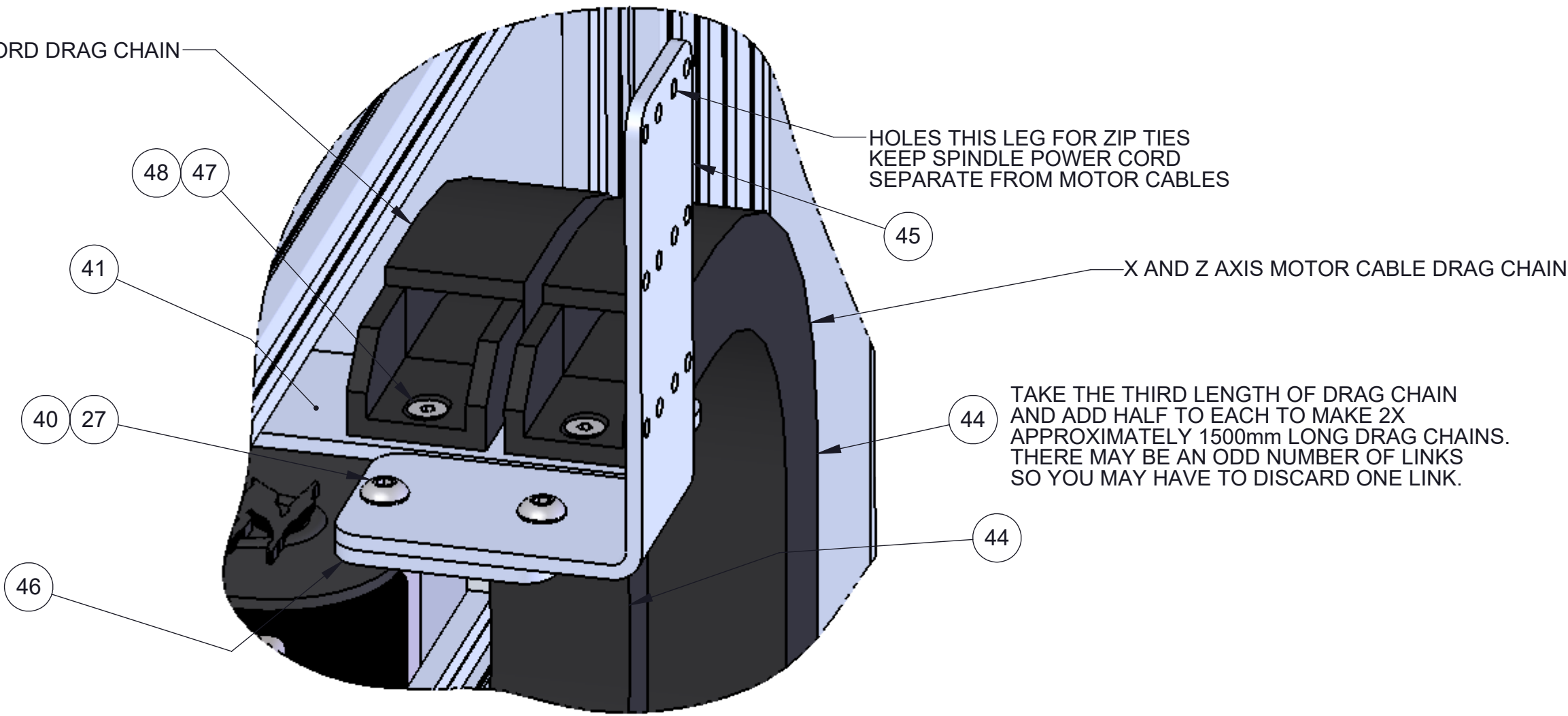
SECTION B-E
SCALE 1 : 2



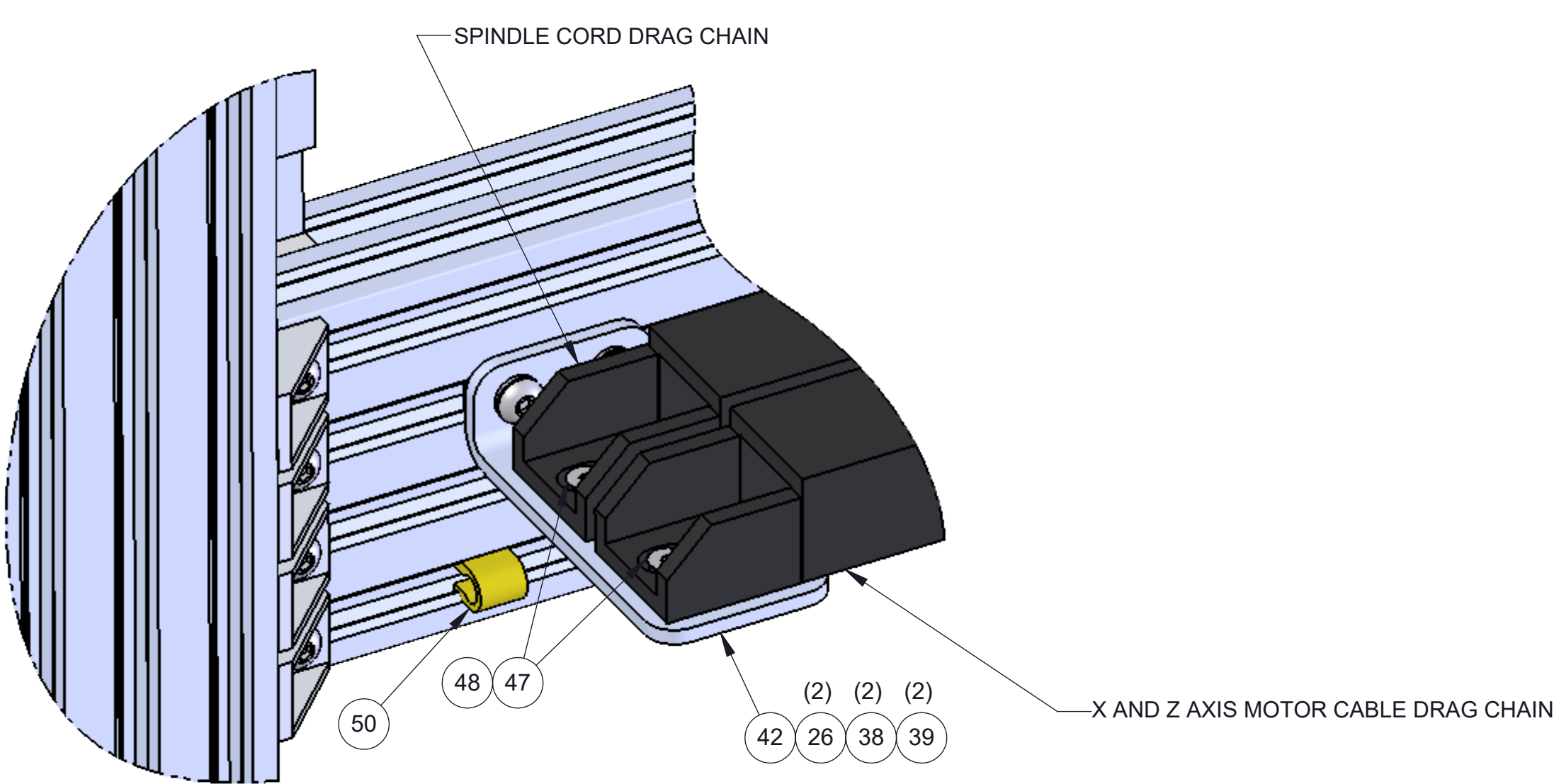
SECTION K-K
SCALE 1 : 2



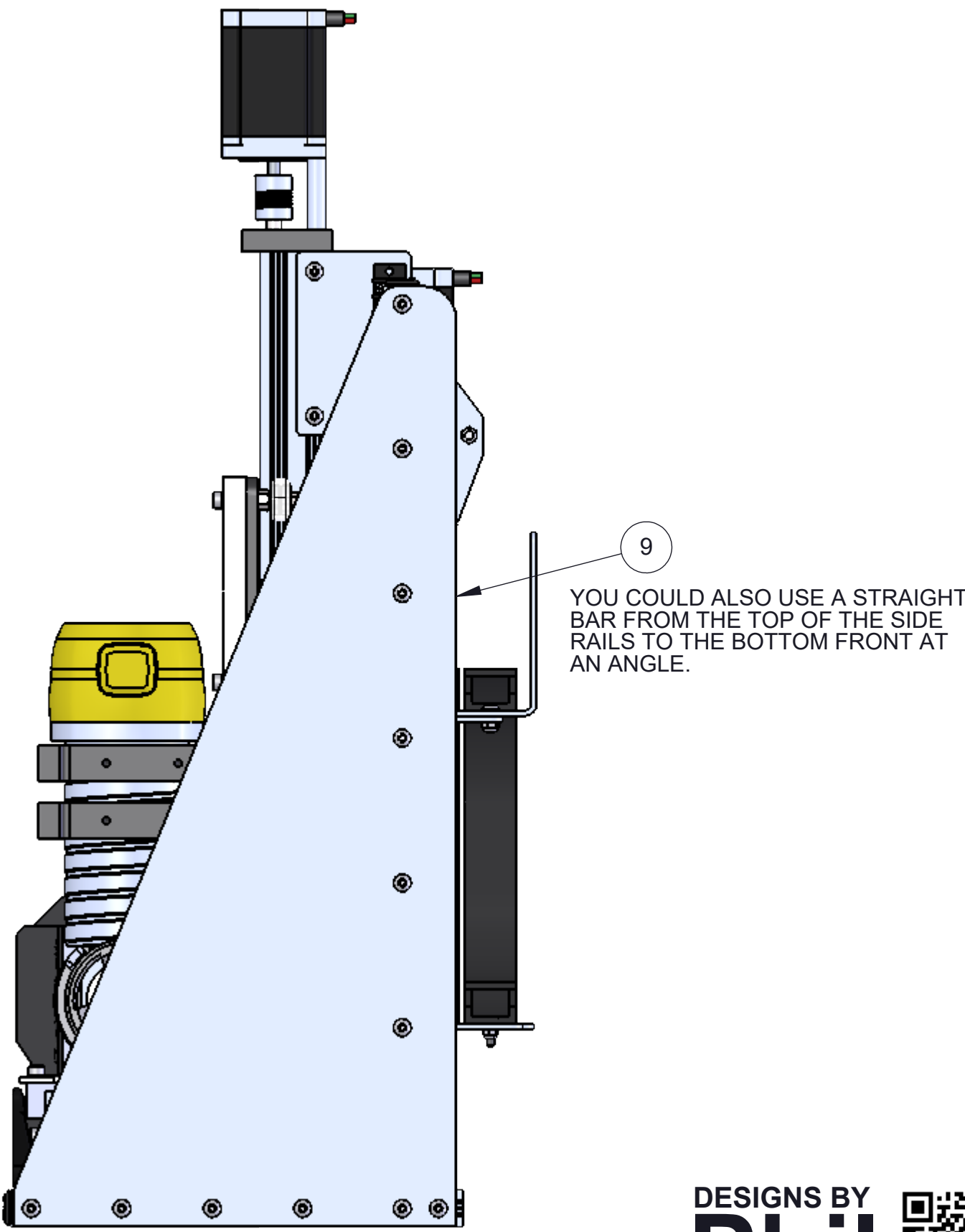
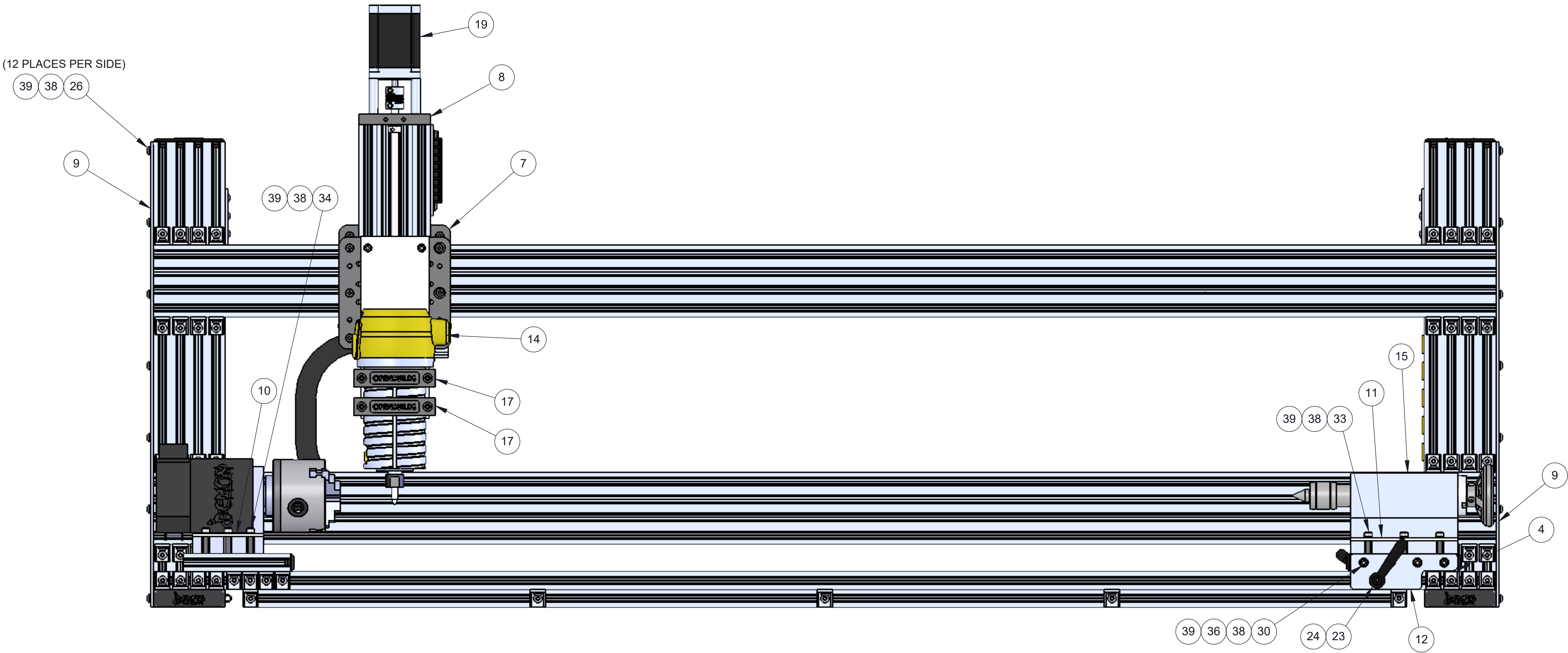
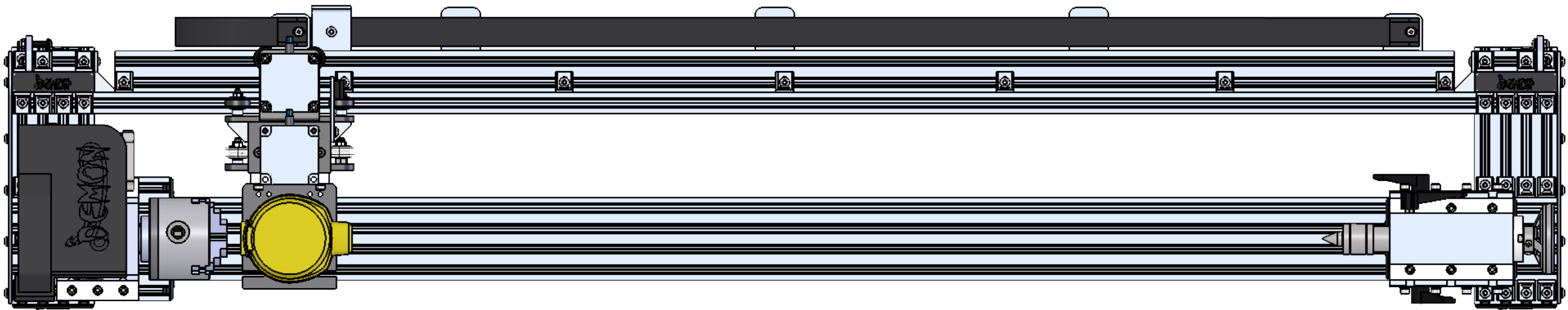
**NOTE: HALF OF THE CORNER BRACKETS COULD BE OMITTED TO SAVE ON COST
4 CORNER BRACKETS PER END INSTEAD OF 8.**

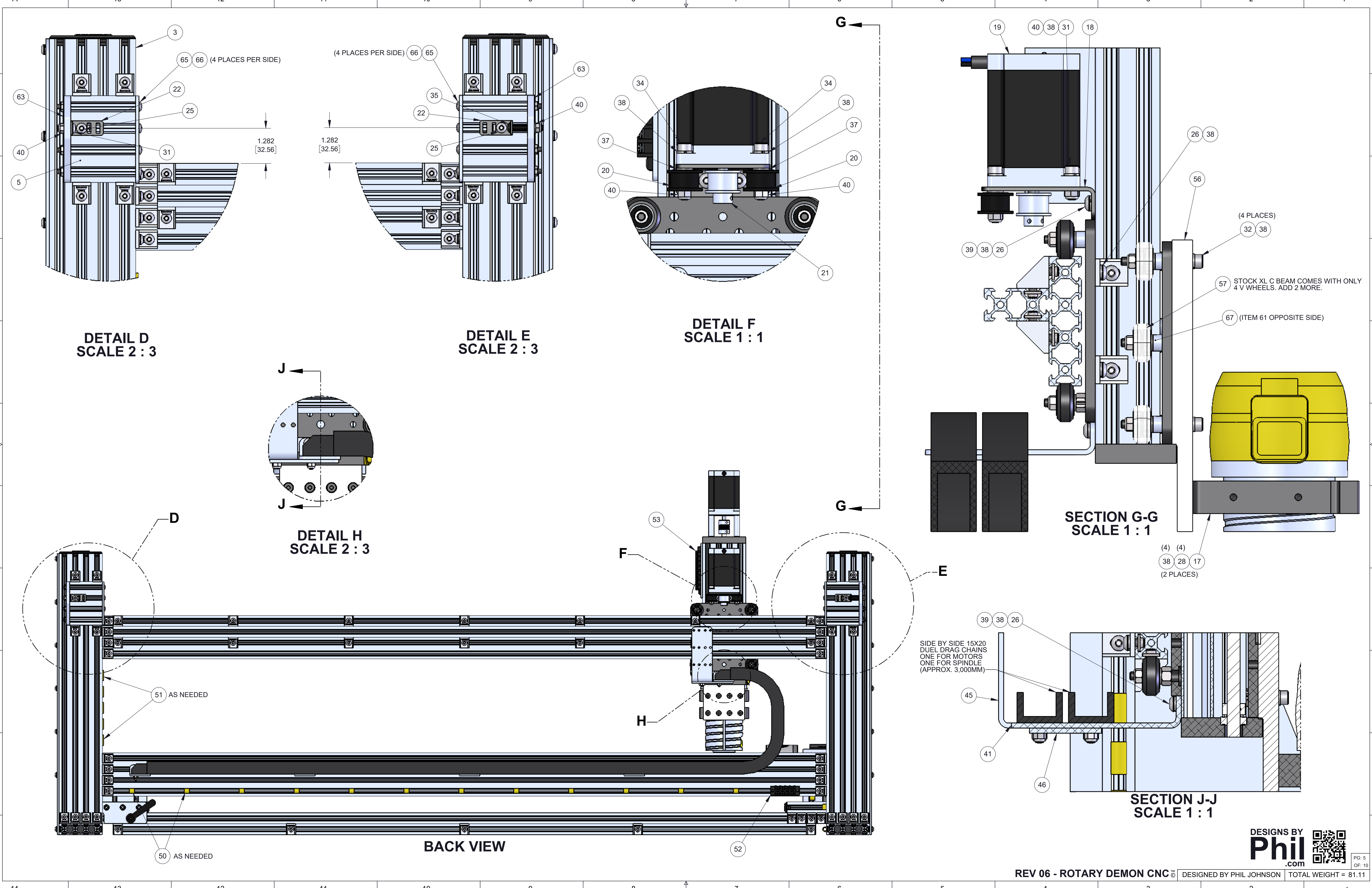


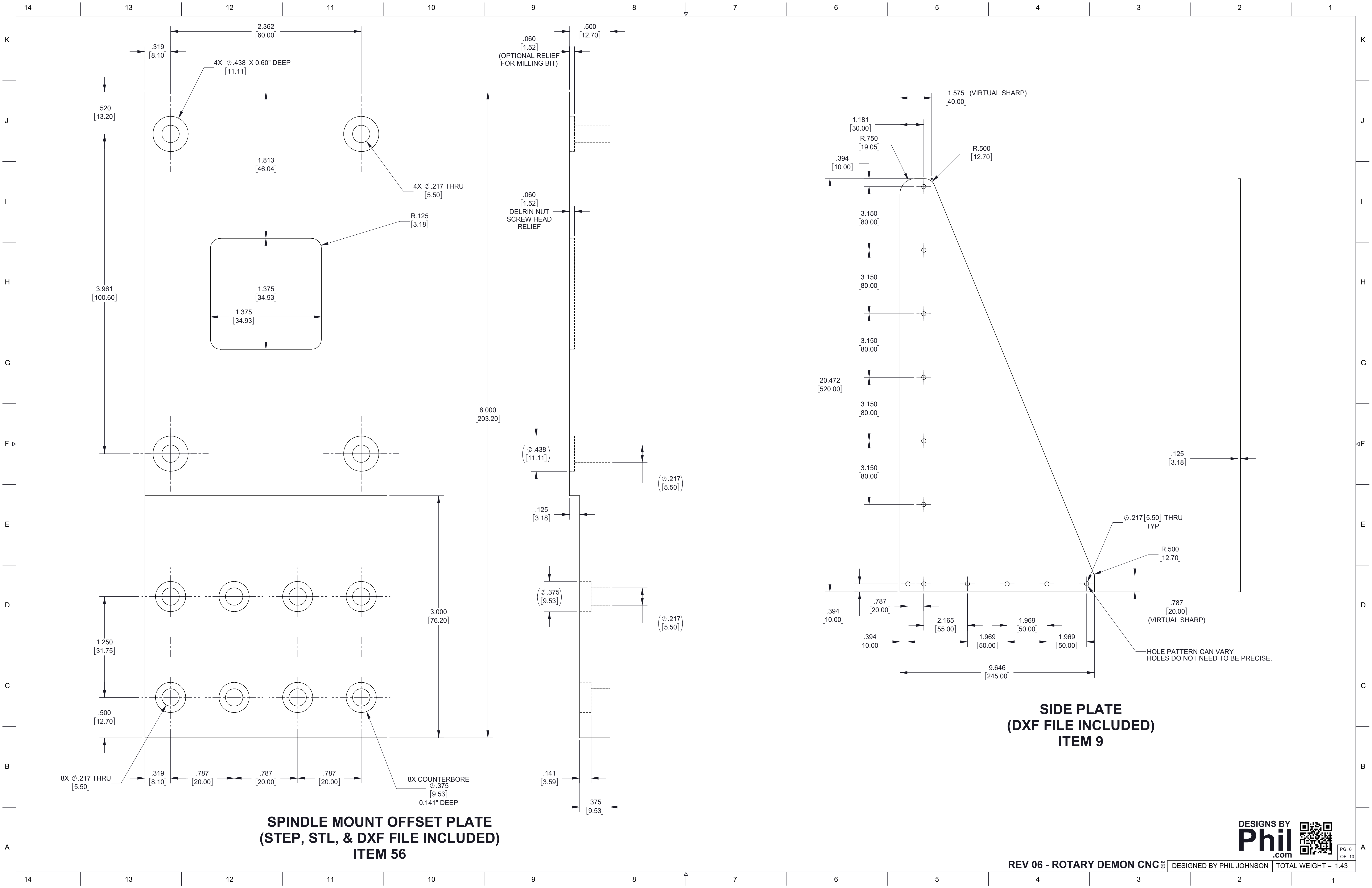
REAR VIEW OF UPPER DRAG CHAIN ASSEMBLY

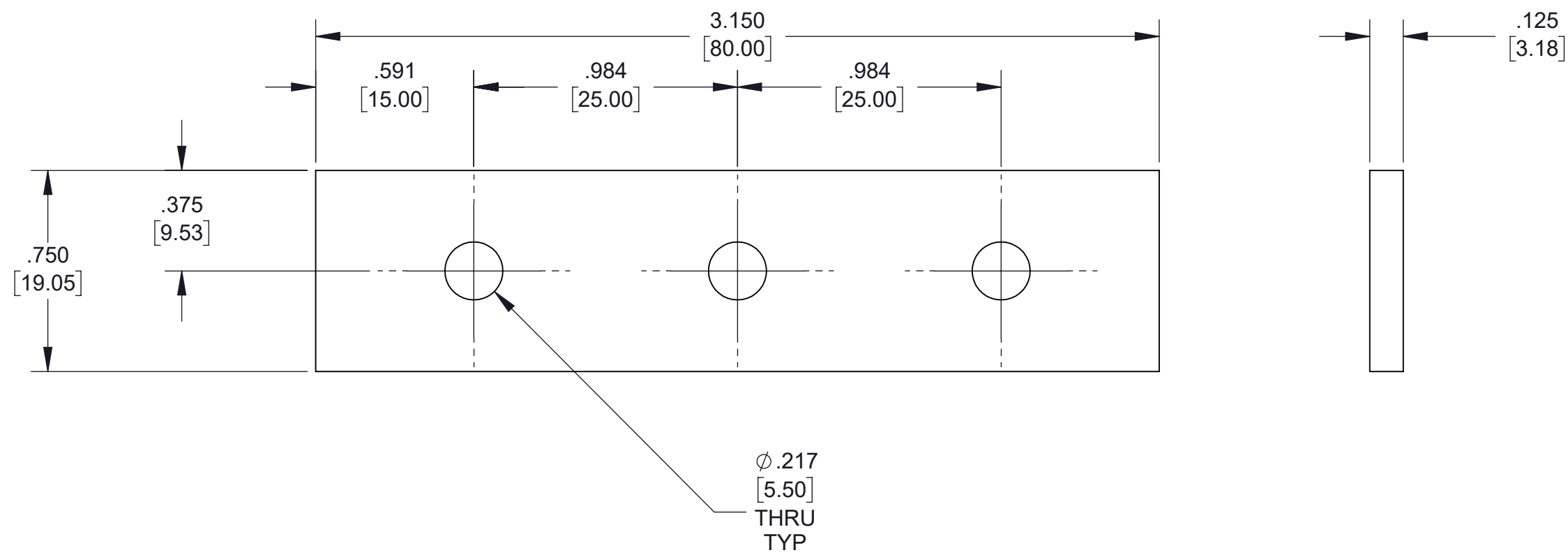


REAR VIEW OF LOWER DRAG CHAIN ASSEMBLY

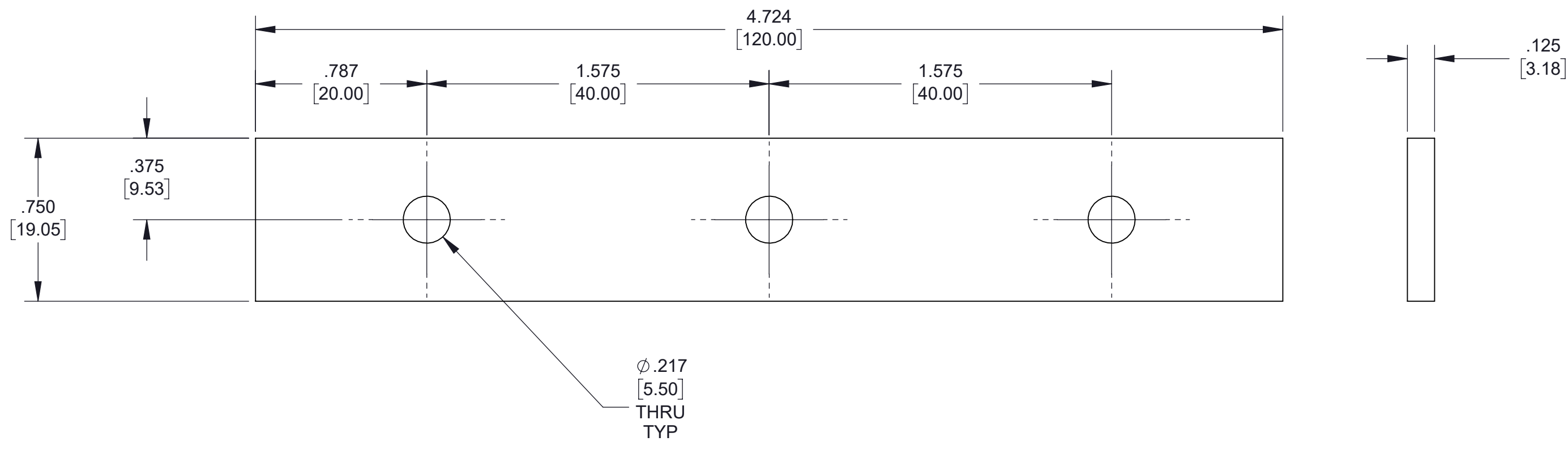




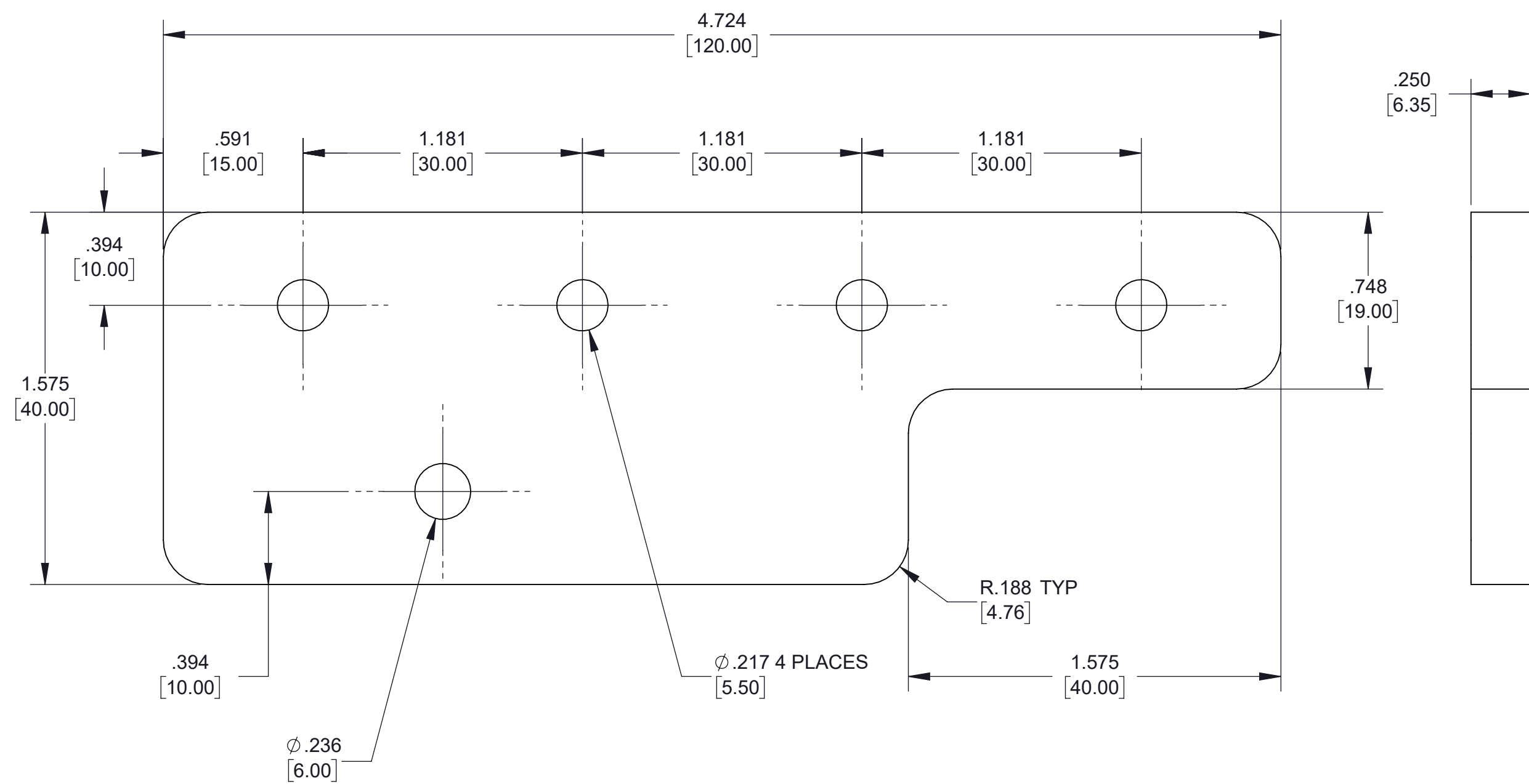




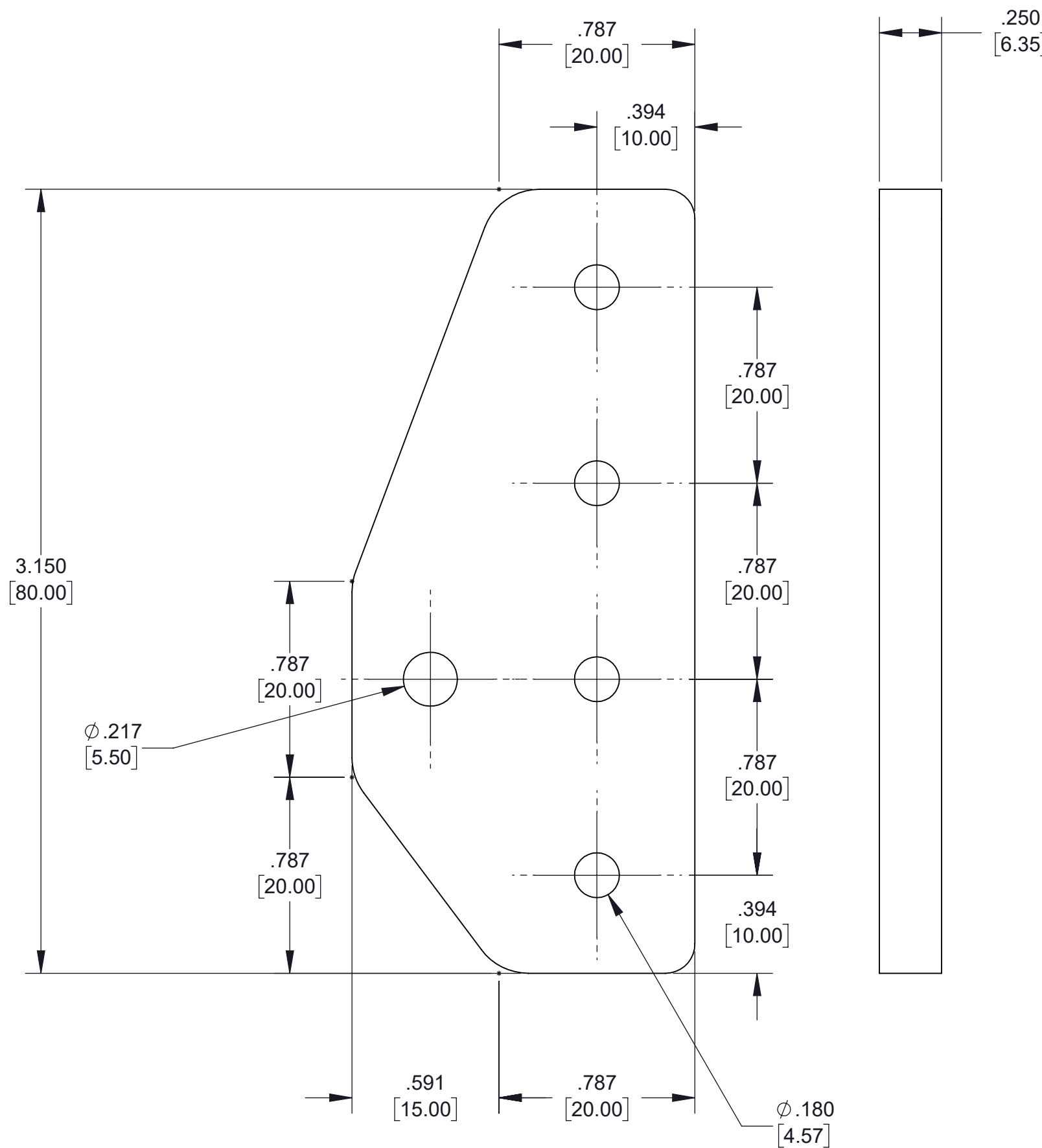
**ROTARY CLAMP PLATE
(PART WILL VARY DEPENDING ON ROTARY)
ITEM 10**



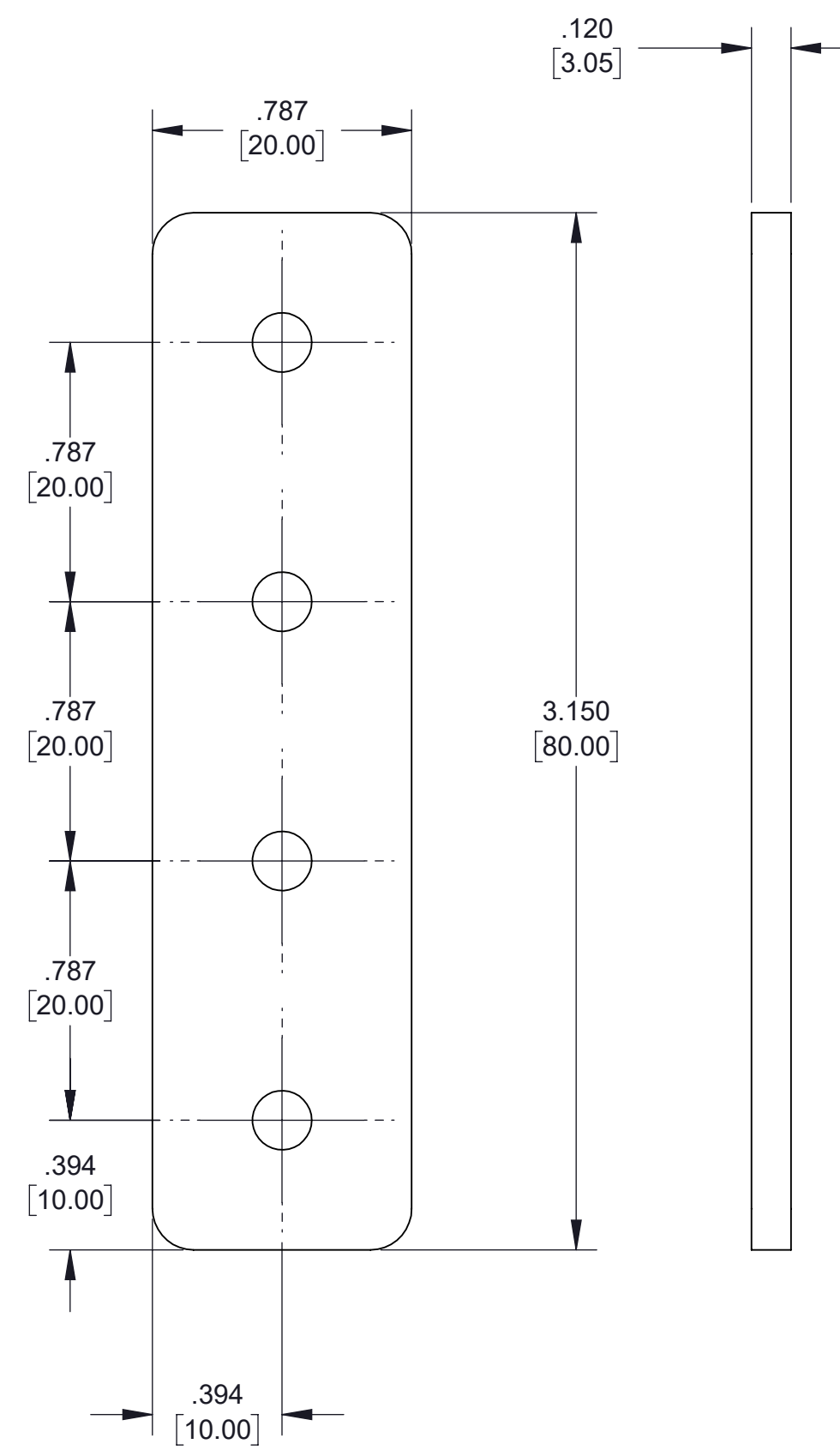
**TAIL STOCK CLAMP PLATE
(PART WILL VARY DEPENDING ON TAIL STOCK)
ITEM 11**



**TAIL STOCK CLAMP PLATE
(DXF FILE INCLUDED)
ITEM 12**

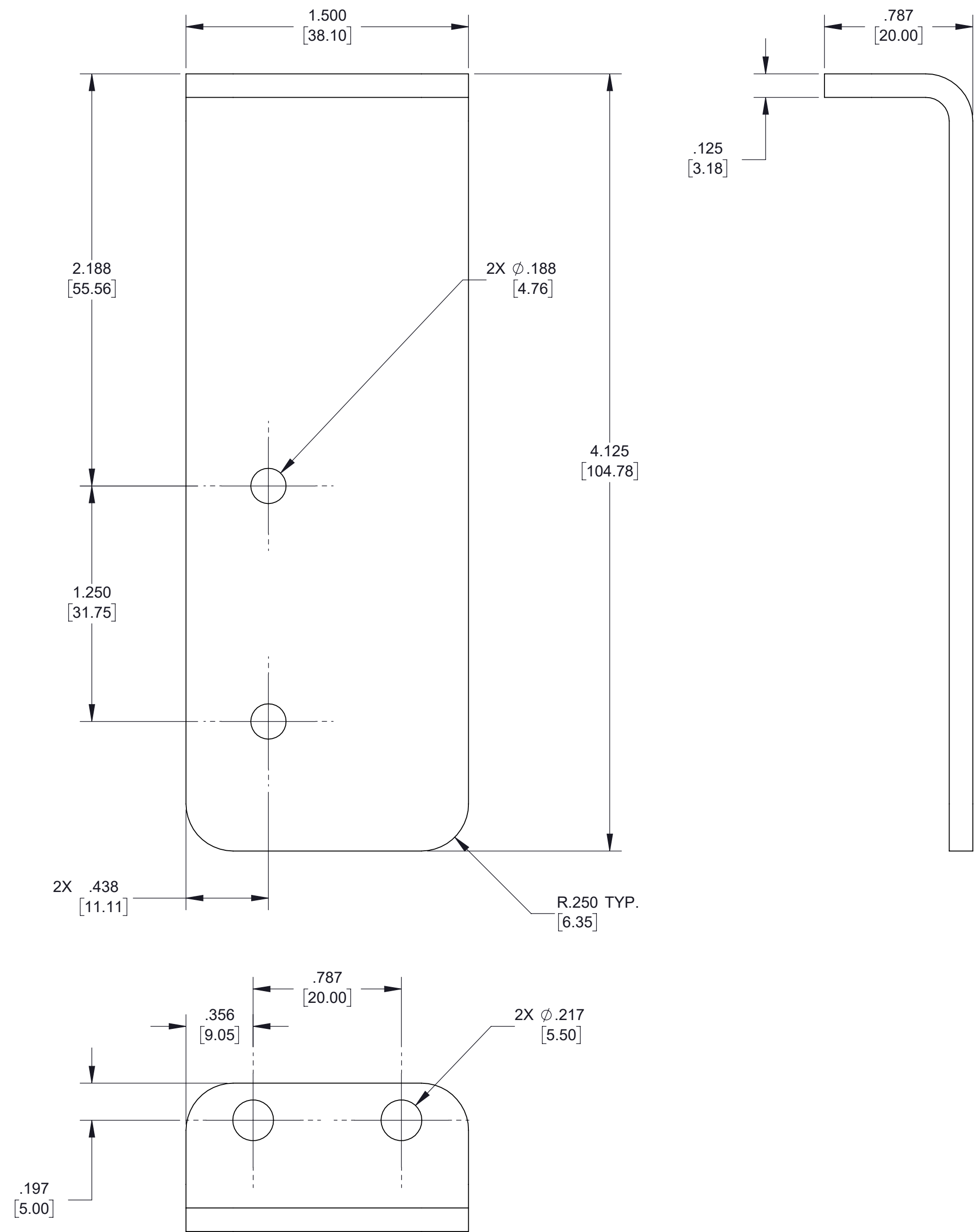
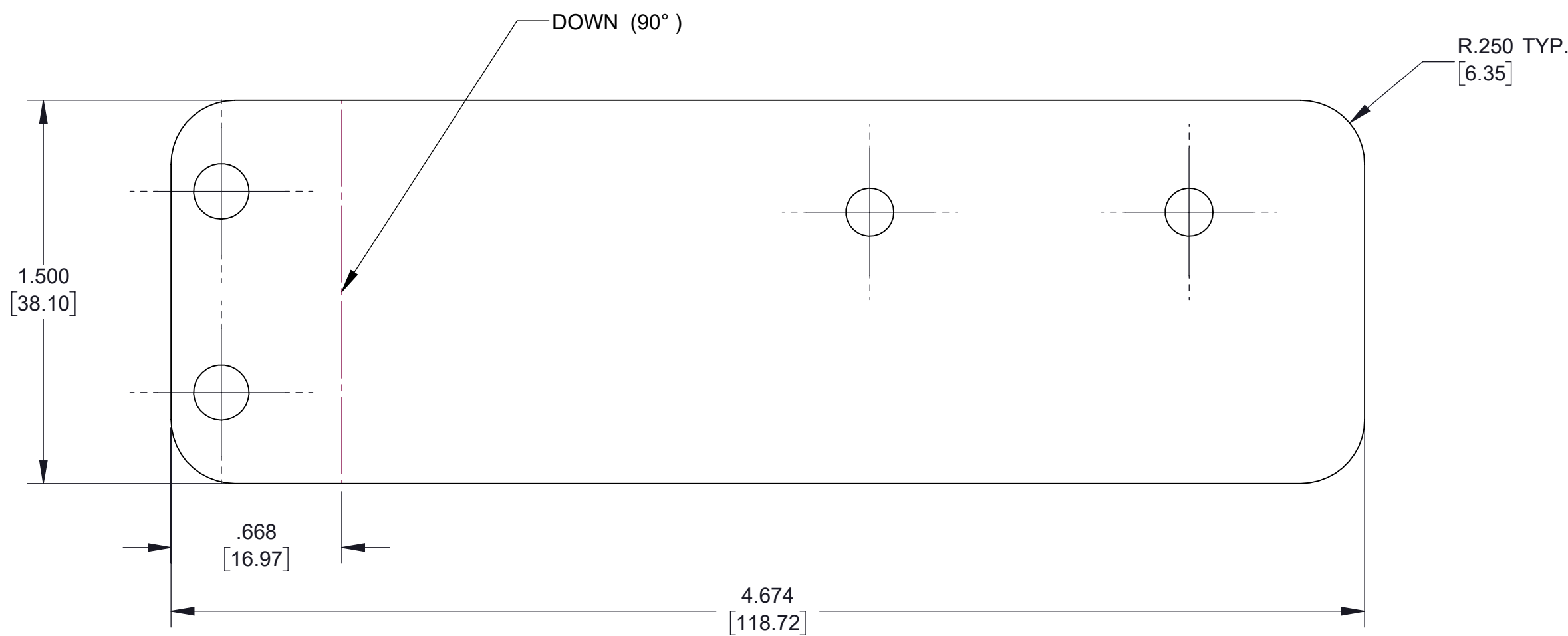


**BELT END PLATE
(DXF FILE INCLUDED)
ITEM 63**

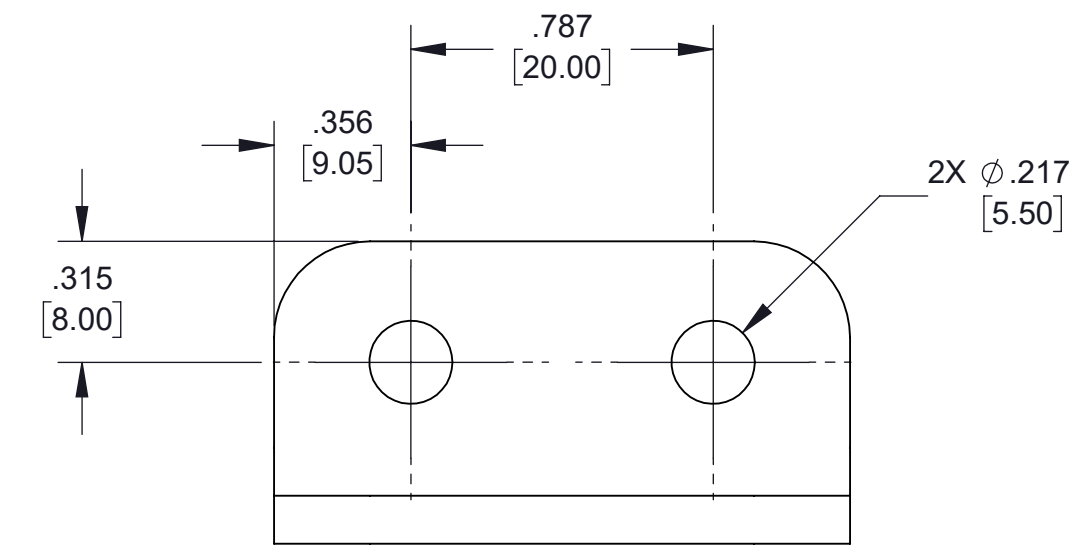
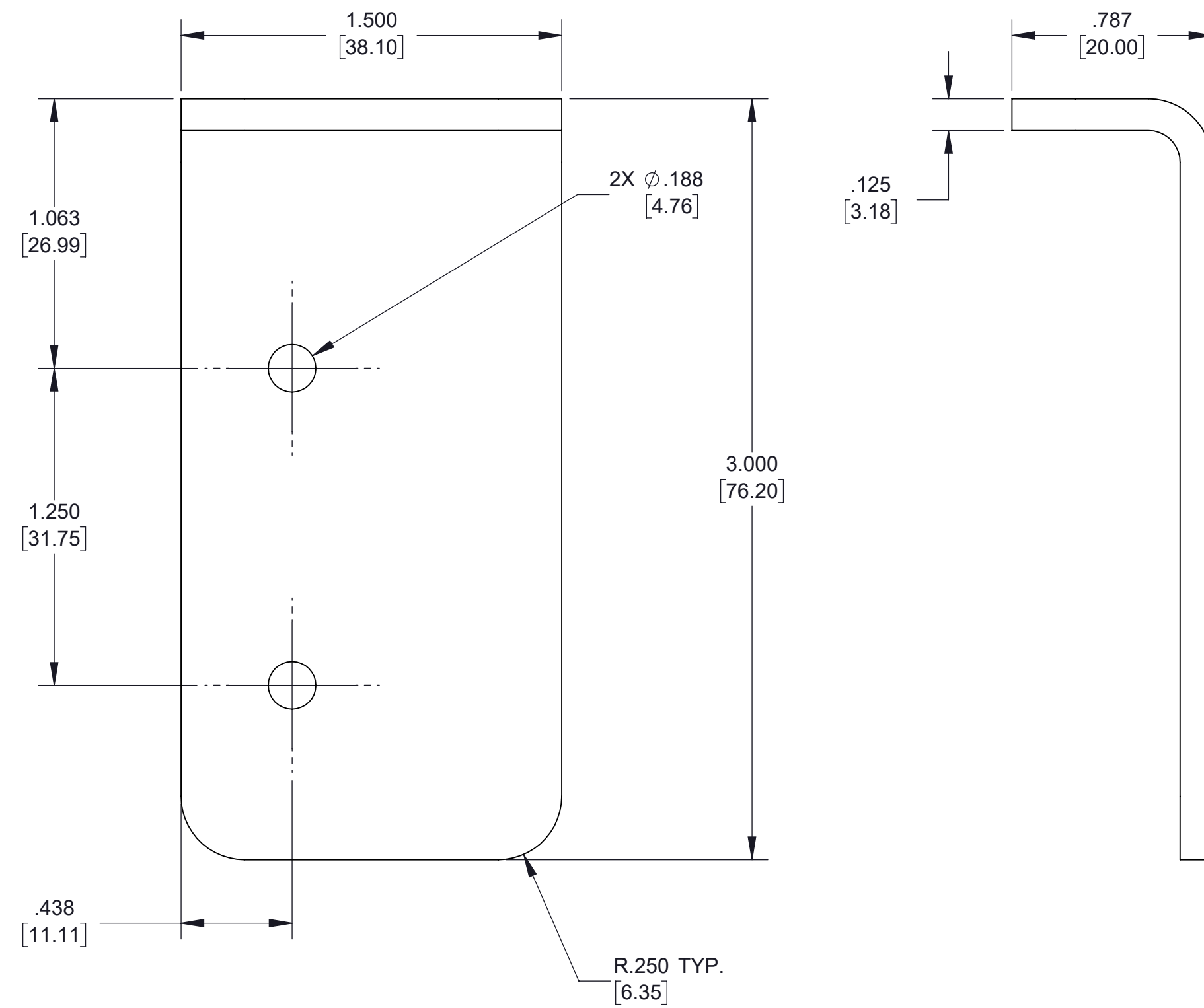
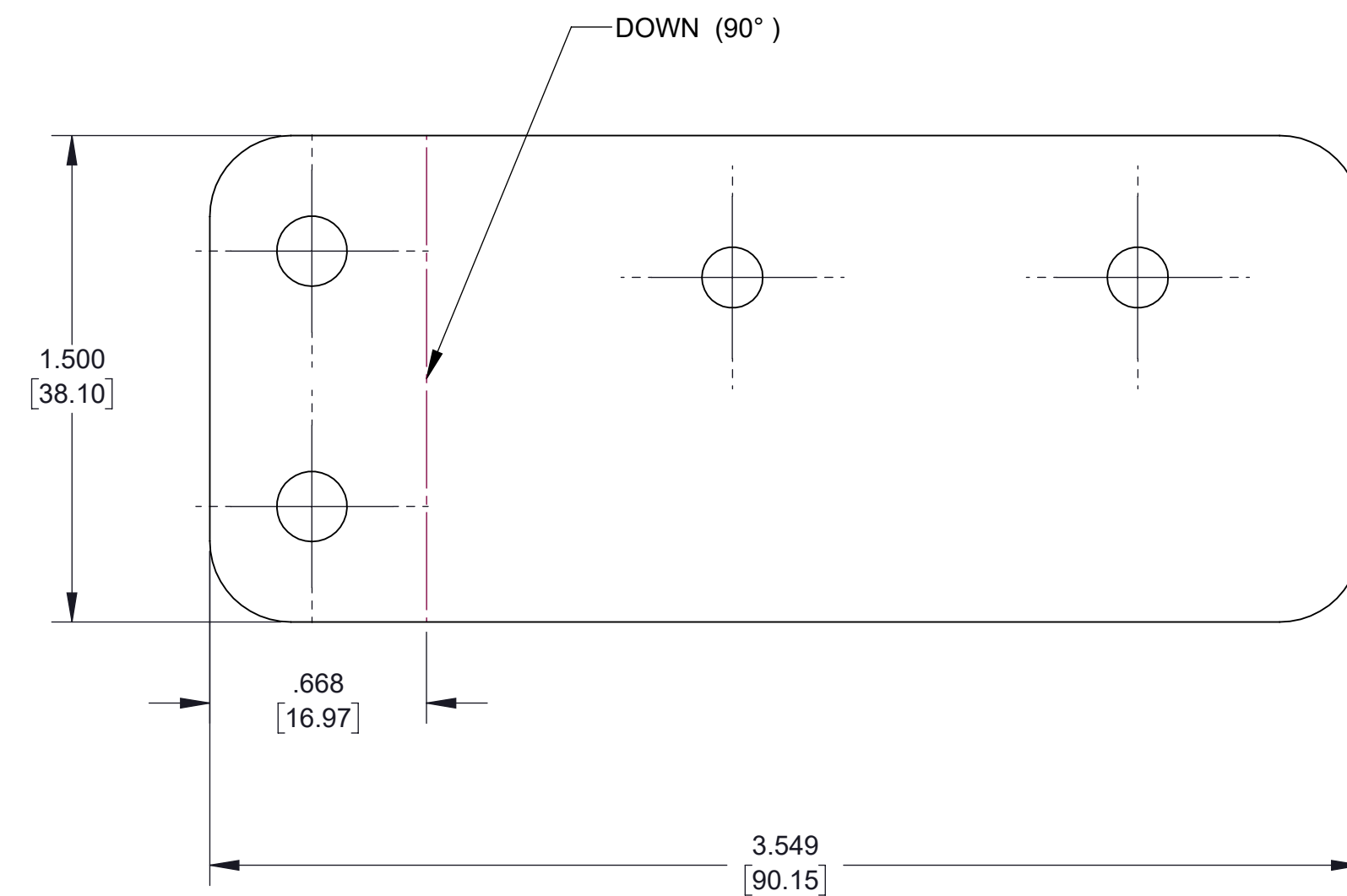


**BELT EXTRUSION COVER PLATE
(DXF FILE INCLUDED)
ITEM 64**



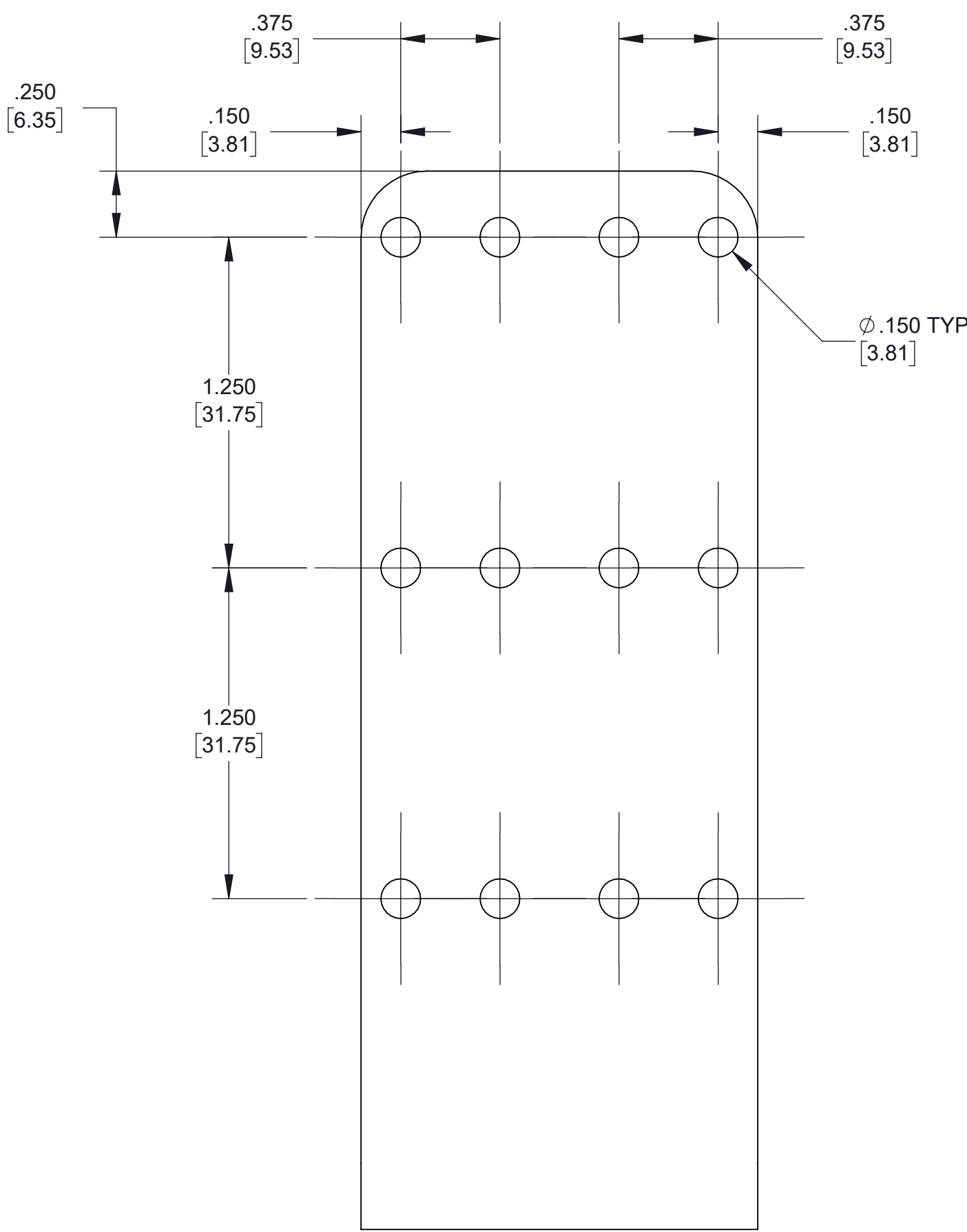
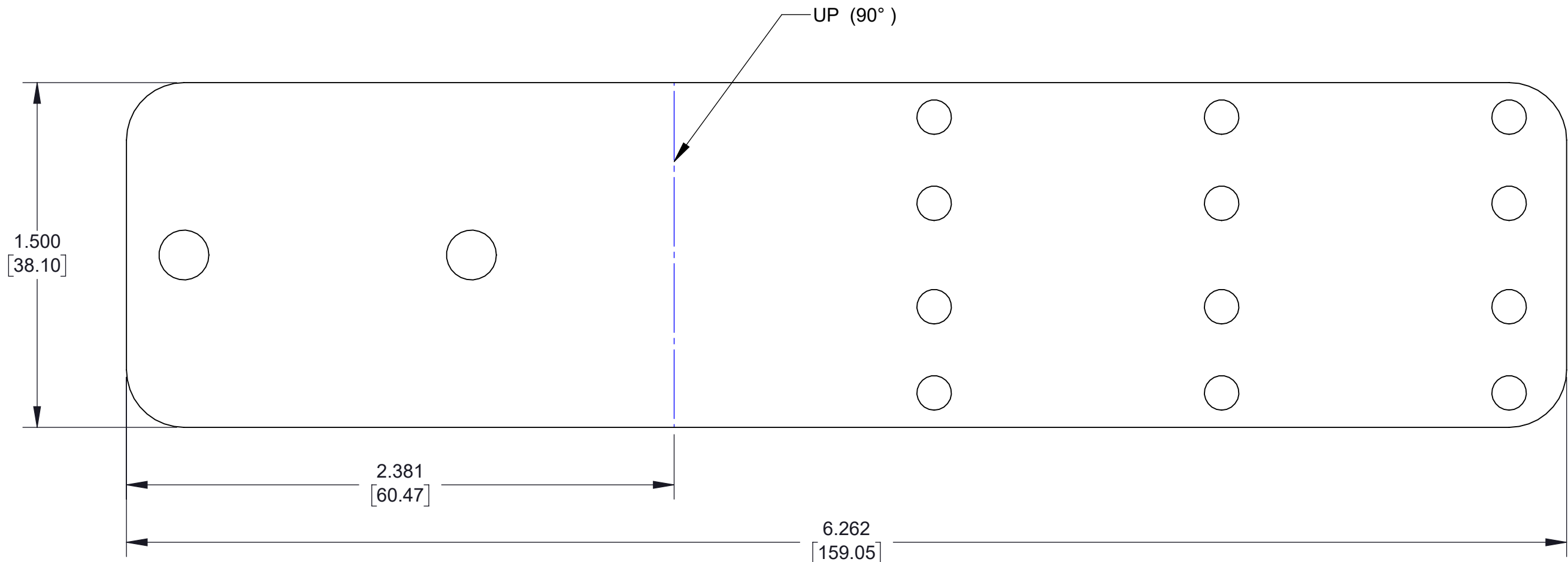


UPPER DRAG CHAIN BRACKET
(DXF FILE INCLUDED)
ITEM 41

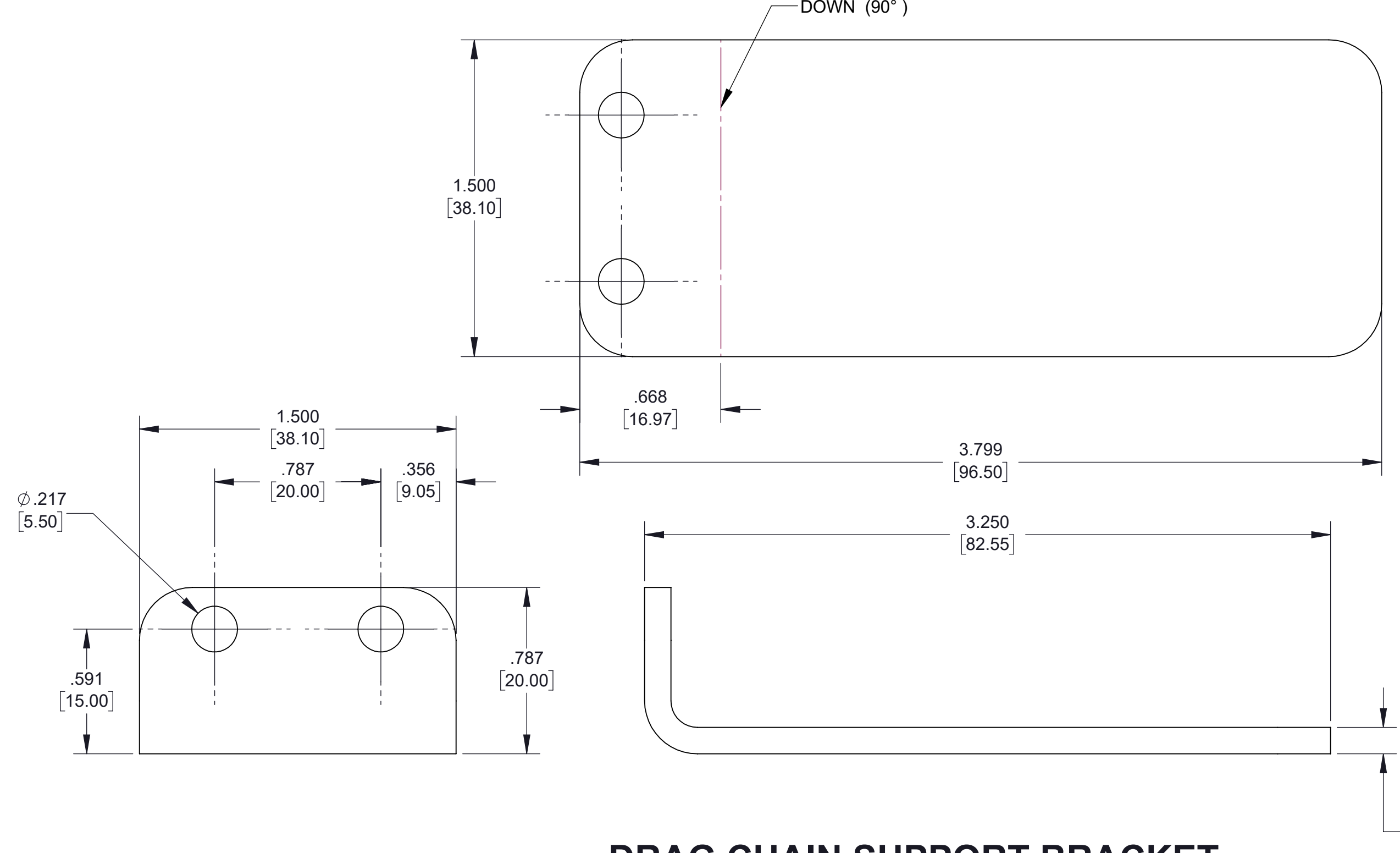
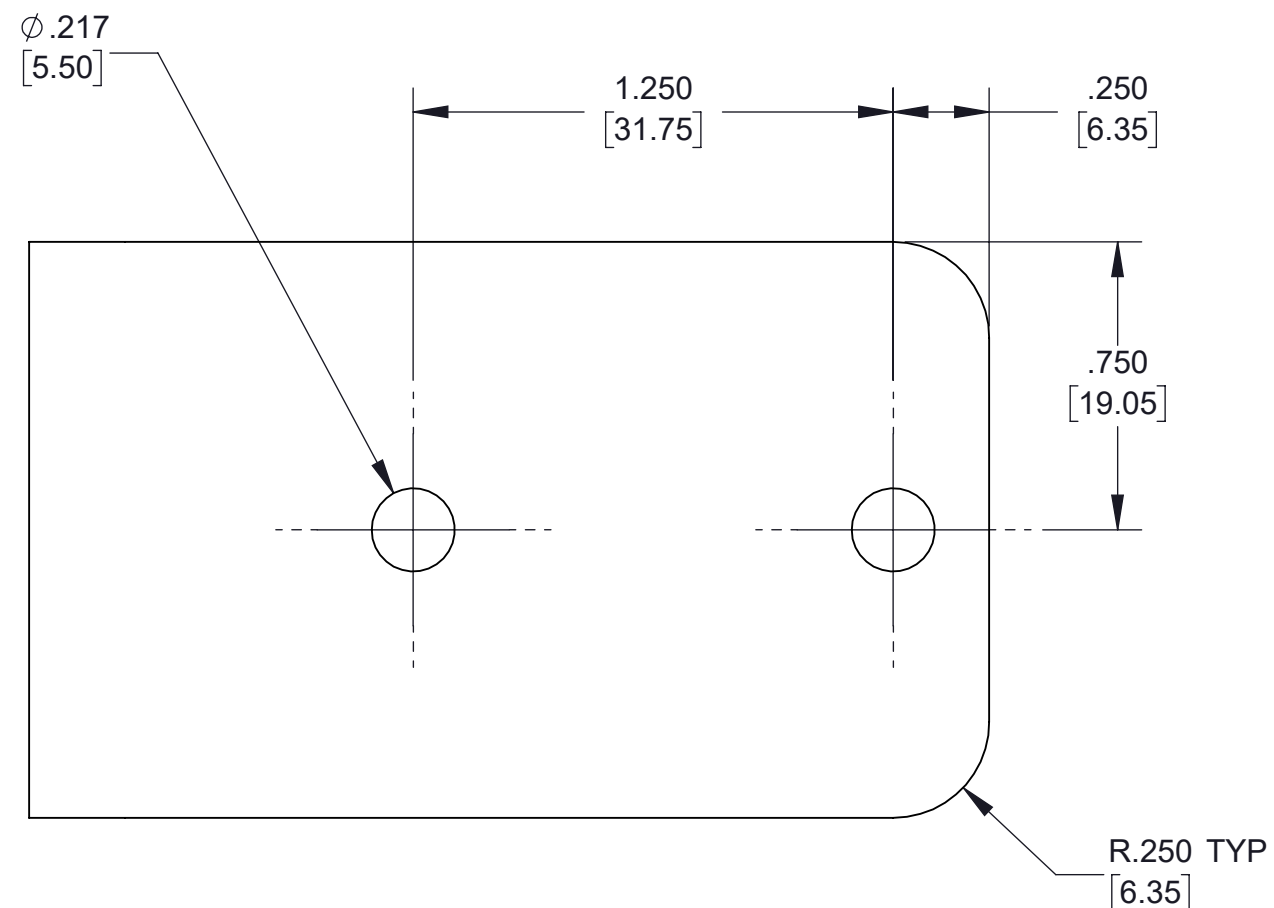


LOWER DRAG CHAIN BRACKET
(DXF FILE INCLUDED)
ITEM 42

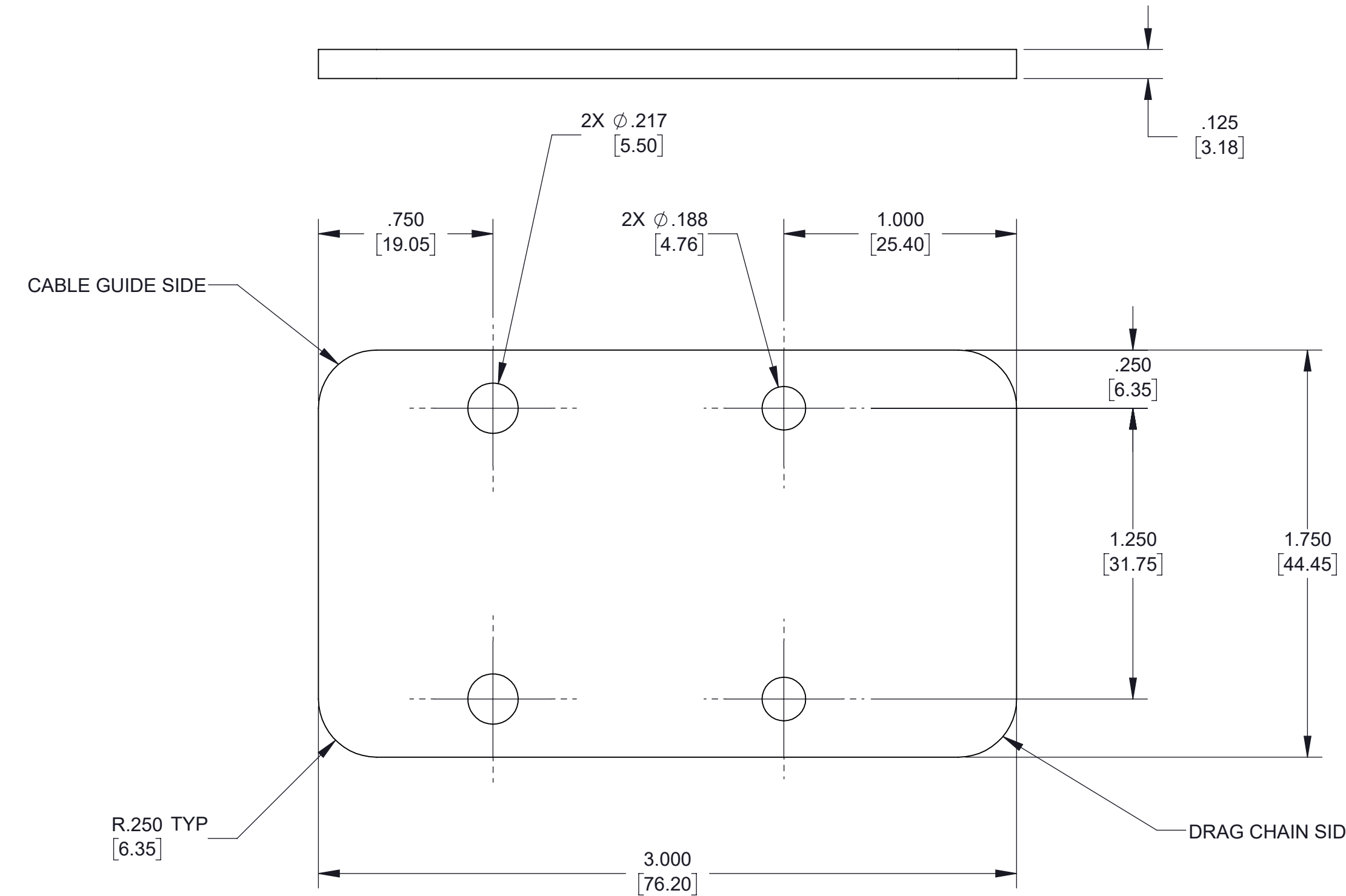




UPPER DRAG CHAIN CABLE GUIDE
(DXF FILE INCLUDED)
ITEM 45



DRAG CHAIN SUPPORT BRACKET
(DXF FILE INCLUDED)
ITEM 49



UPPER DRAG CHAIN CABLE GUIDE OFFSET BRACKET
(DXF FILE INCLUDED)
ITEM 46



